

ABORIGINAL AND TORRES STRAIT ISLANDER PEOPLES PCI KEY FINDINGS

NCR DATA 2020-2024



3.1%

of the overall PCI cohort identify as Aboriginal and/or Torres Strait Islander peoples



55.8 years

is the **average age** of PCI patients identifying as Aboriginal and/or Torres Strait Islander peoples



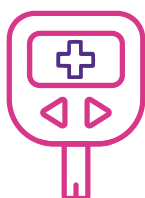
39%

of PCI procedures **were performed on women** identifying as Aboriginal and/or Torres Strait Islander peoples



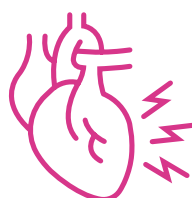
61%

of PCI procedures **were performed on men** identifying as Aboriginal and/or Torres Strait Islander peoples



47.8%

of Aboriginal and/or Torres Strait Islander peoples had **diabetes** when they received a PCI procedure



70%

of Aboriginal and/or Torres Strait Islander peoples who had a PCI presented with **Acute Coronary Syndrome (ACS)**



28.2%

of PCI patients identifying as Aboriginal and/or Torres Strait Islander peoples **had a previous PCI**



93.7%

is the rate of **procedure success** for Aboriginal and/or Torres Strait Islander peoples

National Cardiac Registry

Phone: +61 3 9903 0984

Email: info@nationalcardiacregistry.org.au

Website: <https://nationalcardiacregistry.org.au>

