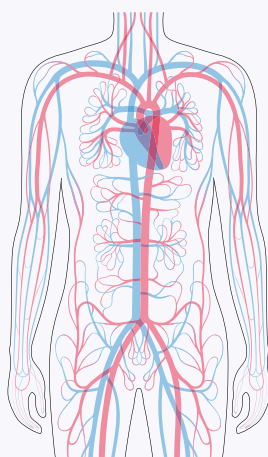


RADIAL ACCESS FOR PCI IS BEST PRACTICE

FASTFACTS

There are **3 main access points** for Percutaneous Coronary intervention (PCI).



- 1. RADIAL**
- 2. FEMORAL**
- 3. BRACHIAL**



The use of **radial access** considered **best practice** as it is associated with lower rates of bleeding and adverse events.

✓
76%

According to The National Cardiac Registry 2022 report, **77.6% of patients who underwent a PCI received best practice care of radial access.**

Women generally have **lower rates** of radial access.



76%
RADIAL ACCESS
MALES



73%
RADIAL ACCESS
FEMALES

Raising awareness of the differences in treatment practices between sexes is important to ensure equitable healthcare and improve outcomes.