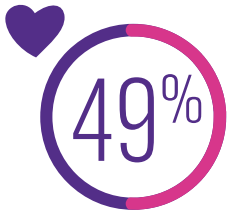




PCI KEY FINDINGS

FASTFACTS 2023

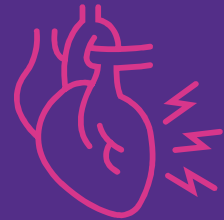


The NCR currently captures **49%** of all PCIs performed annually, across Australia*

23,622 cases were performed on **21,368 patients**

75.4% of cases were performed on males, whose **average age** was **66.4 years**

19.6% of PCI cases were performed **out-of-hours**

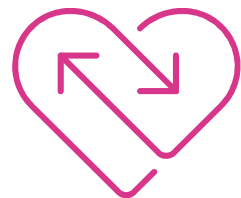


The **in-hospital major bleeding rate**, a potential complication, was **0.6%** and was lower among radial access cases - **0.3%**



PCI for **acute coronary syndromes (ACS)** accounted for **55.1%** of the caseload

Radial access is the predominant arterial approach for PCI, and is performed in **78.5%** of procedures. This rate has been increasing gradually since 2019



The rate of **referral for PCI patients to cardiac rehabilitation** was **77.7%**. This was lower in private sites (**72.3%** vs **79.8%** in the public sector) and lower amongst low volume centres - **66%**

The **in-hospital mortality rate** was low for PCI patients

1.6%



Primary PCIs make up **16.1%** of all PCIs

30-day unplanned cardiac readmission rate was **4.3%**

Major adverse cardiac event rate including; death, new myocardial infarction, stent thrombosis, unplanned revascularisation or stroke was highest among STEMI patients - **6.6%** compared to the overall cohort at **2.5%**

* Australian Institute of Health and Welfare (2023) Heart, stroke and vascular disease: Australian facts, AIHW, Australian Government, accessed 1 November 2023