

WOMEN AND MEN PCI KEY FINDINGS

NCR DATA 2025



WOMEN

70 years

is the **average age** of women receiving a PCI



76.8%

of PCIs performed on women utilised the **radial access** approach



MEN

66 years

is the **average age** of men receiving a PCI



82.4%

of PCIs performed on men utilised the **radial access** approach



0.9%

of PCIs performed on **women had an in-hospital major bleeding event** post-PCI



0.5%

of PCIs performed on **men had an in-hospital major bleeding event** post-PCI



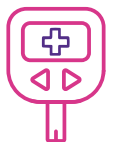
17.6%

is the rate of **severe obesity** for women



11.7%

is the rate of **severe obesity** for men



31.0%

is the rate of **diabetes** in women



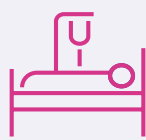
28.0%

is the rate of **diabetes** in men



2.0%

is the rate of **in-hospital mortality** for women



1.6%

is the rate of **in-hospital mortality** for men



Median times from symptom onset to **PCI mediated reperfusion 2024**

	Symptom Onset	First Medical Contact	Diagnostic ECG	Arrival at PCI Hospital	Reperfusion
Women	194 mins	112 mins	96 mins	58 mins	
Men	167 mins	100 mins	89 mins	55 mins	
Difference	27 mins	12 mins	7 mins	3 mins	
	3 mins	5 mins	1 min	2 mins	



Increase



Decrease



No change

from previous year's reported figure

www.nationalcardiacregistry.org.au

National Cardiac Registry

Phone: +61 3 9903 0984

Email: info@nationalcardiacregistry.org.au

Website: <https://nationalcardiacregistry.org.au>

